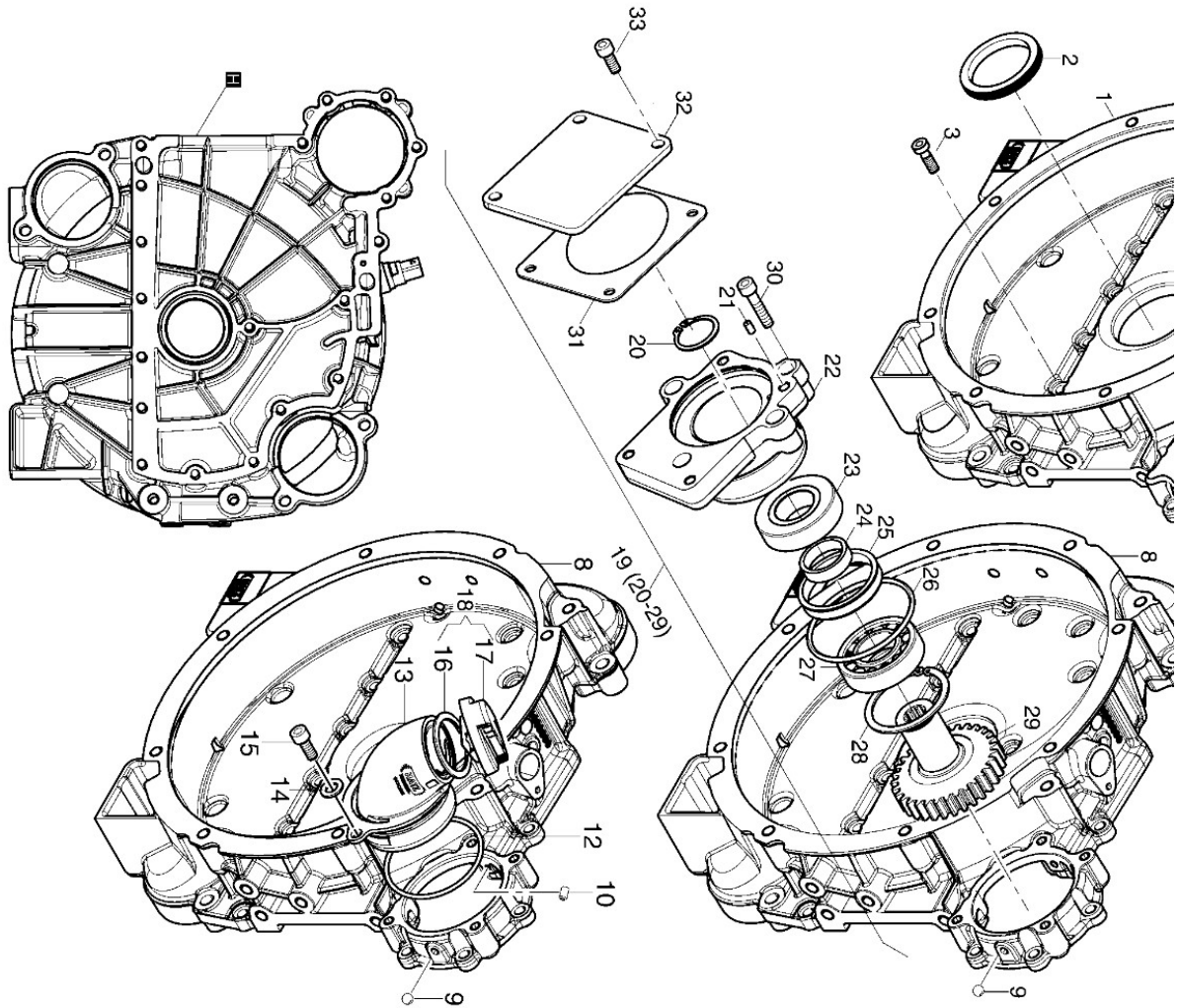


M26 Intermediate housing SAE5 4 H 50 TICD.10



M26 Intermediate housing SAE5 4 H 50 TICD.10

Pos.	Part no.	Description	Qty.	Notice	Add. notice
1	000004336100	INTERMED.HOUS. SAE 5	1	SAE 5	
2	000050129102	OILSEAL 55X 70X 8	1	55 x 70 x 8	
3	000050171500	ALL.SCR.M 8X 25	19	M 8 X 25 DIN 912-8.8 A3B	
4	000050632500	CYL.PIN 14 M6X28	2	14 M6 X 28 DIN 6325geh.	
5	000050633500	ROTAT.SPEED SENSOR DG6-S	1		
6	000050661500	HEXSCREW M 6X 25 with flange	1	M 6X 25 DIN 6921-8.8A2B	
7	000050160800	CLOSING PLUG 10MM	1	F 5 14x10,7x7,5 SCHW.	
8	000004336000	INTERMED.HOUS. SAE 5 + PTO ON TOP	0... 1	SAE 5 + PTO	
9	000050476400	BALL 6,5MM	1	DIN 5401 DIN 5401	
10	000050262400	THREADED PIN M 6X10	0... 1	M 6 X 10 DIN 916TUF360G	
12	000050670000	O-RING 77 X3,5 NBR	1		
13	000004342300	OIL FILLING	1		
14	000050115700	DISC 8,4	2	8,4 DIN433-St 140 HV	
15	000050450200	ALL.SCR.M 8X 25	2	M 8 X 25 DIN 912-8.8 A3B TUF	
16	_noorder	No single order	-		
17	_noorder	No single order	-		
18	000050670801	OIL FILLER CAP	1		
19	000002549100	SIDE P.T.O. OPPOSITE CP4	1	part was replaced by SIDE P.T.O. OPPOSITE CP4 000002549101	
19	000002549101	SIDE P.T.O. OPPOSITE CP4	1		Old Identno: 000002549100
20	000050020900	CIRCLIP 30X1,5	1	DIN 471 471	
21	000004104900	PIN	1	(ø 5 mm)	
22	000004342901	INTERMEDIATE FLANGE	1	part was replaced by SIDE P.T.O. OPPOSITE CP4 000002549101	
22	000002549101	SIDE P.T.O. OPPOSITE CP4	1		Old Identno: 000004342901
23	000050676700	GROOV. BALLBEARING 6206 1RSR	1		
24	000004342800	DISTANCE RING	1		

